



Next Generation Intelligent LCDs

demmel products GmbH

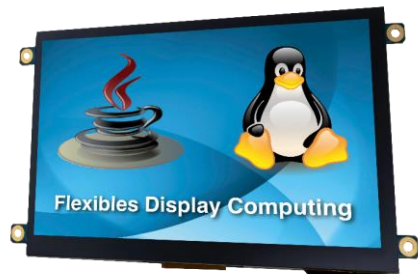
*Your reliable out-sourcing partner:
our intelligent embedded displays
for your smart solutions*



Our Company

demmel products – the company

- Founded in 2011 by Herbert Demmel
- 25+ years of outstanding Know-How and expertise
- First iLCDs already in 2003
- Specialized in intelligent display- and HMI-solutions
- Worldwide customer base (97% export)
- Medical devices, automation, industrial applications
- Developed in Austria, produced in Europe

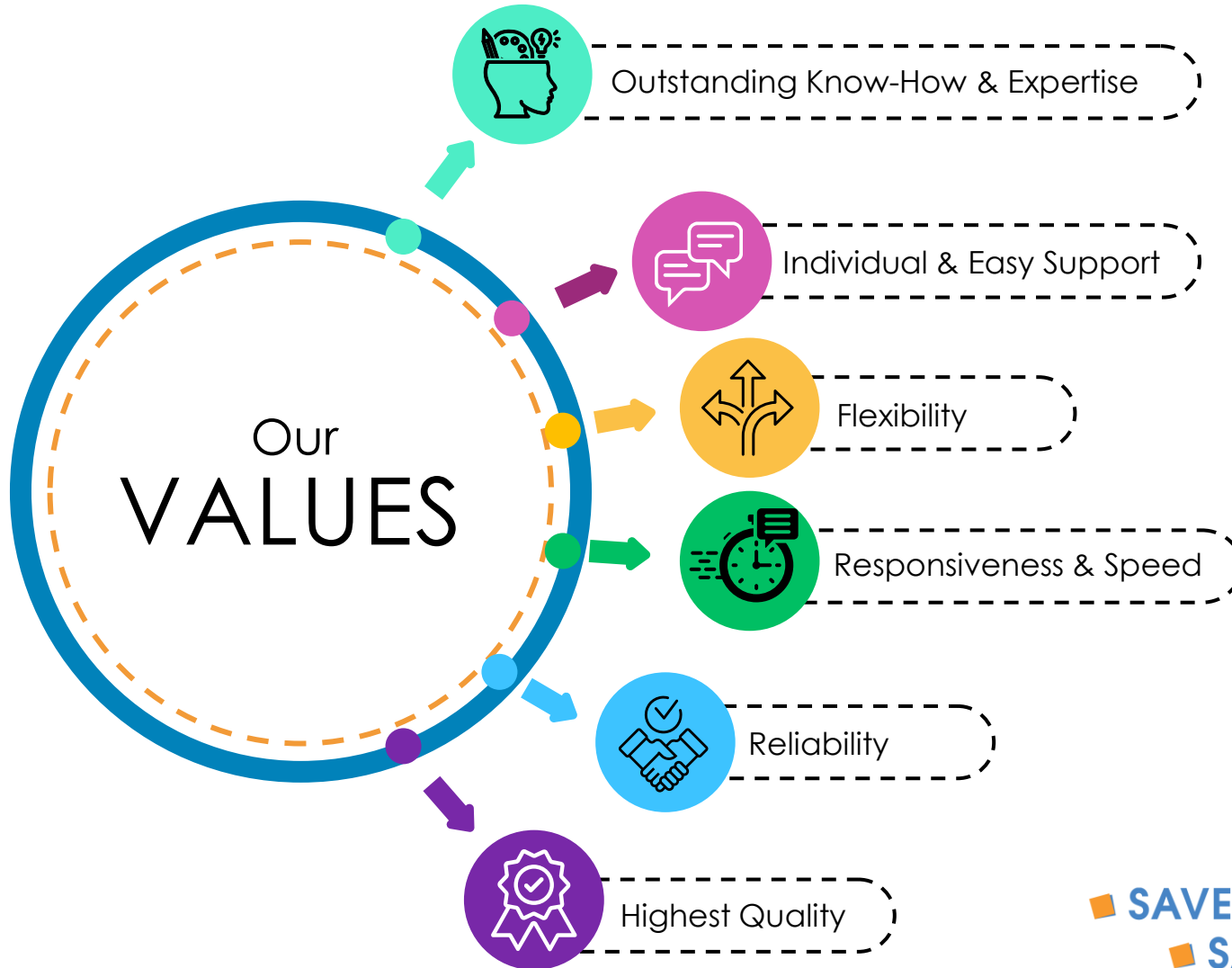


Our Mission

Our Mission

As a reliable, highly professional and highly skilled **outsourcing partner** for life-time managed, high quality embedded intelligent displays we will **help** electronic device producers to **save time & cost, resource** and **trouble**.

Our Values



SAVE TIME
SAVE MONEY
SAVE MANPOWER



Why demmel?

YOU: the experts for your electronic device

- You can focus on your core competencies
 - you reduce complexity
 - you save time and manpower
 - you save money
- You gain more flexibility → you can react promptly to higher workload
- You can outsource your risks
- You can simplify your supply chain
- You can meet your project deadlines
- You can realize your growth targets more quickly (no delays)
- You benefit from reducing cost and getting highest quality very fast

Why demmel?

WE: the experts for outsourced embedded displays

- We do all the low-level programming for your display
- We do the hardware development for your display, incl controller
- We simplify the GUI programming for your device
- We do necessary amendments
- We carry the risks related to the display (EOL, longterm availability)
- We offer highest quality
- We offer outstanding expertise & know-how as an iLCD pioneer since 2003
- We are extremely flexible, fast and highly responsive
- We offer easy, personal service

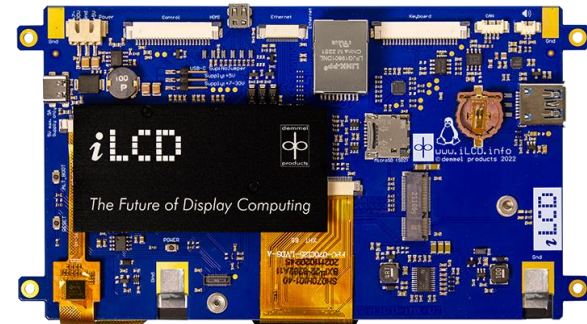
**→ We are the most reliable outsourcing partner
on the market
for high quality embedded displays**



Our Product Lines

Intelligent embedded displays including processor, on-board memory, multiple interfaces and firmware:

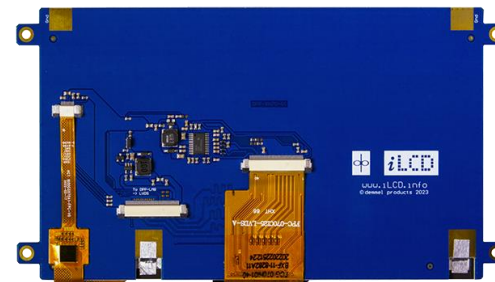
- [iLCD JPro](#)
 - „classic“ series of intelligent displays with microcontroller and in-house firmware; Java programmable or actuated via high-level commands
- [iLCD Linux](#)
 - high-performance series based on Yocto Linux including high-speed processor, graphics accelerator and even more interfaces



Our Product Lines

High-end displays either including control electronics or just as pure TFT-panels:

- [LCD Pure:](#)
High-end adaptable LCD panels, without intelligence or control electronics
- [LCD Pure X:](#)
LCD Pure Series + PCB including display specific control electronics



From A to D(isplay)

We even go beyond our standard portfolio by offering:

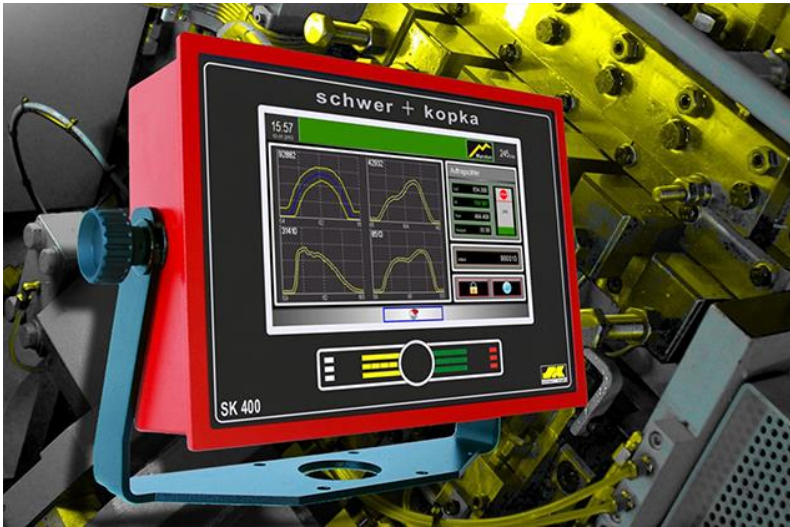
- A customized embedded board + display
 - Special interfaces
 - Extensions
 - Alternative display sizes
 - Adaptations at and on the display itself
 - Adaptations of the coverglass
 - Color printing and logo printing
 - Adhesive solutions
 - Touchcontrollers upon choice
- One overall high quality solution:
- Hardware + firmware + software + GUI
 - From a reliable, highly skilled, high quality outsourcing partner
 - Individual, fast & easy support for implementation

Applications using our Solutions

- Healthcare devices
- Mechanical engineering devices
- Vandalism-proof user-interfaces (up to 6mm coverglass / IK10)
- External display solutions (lifting ramps, elevators, ..)
- Outdoor systems
 - Kiosk systems
 - charging stations, ..
- Industrial special applications (laser welding,..)
- Process control systems, etc.



Applications using our Solutions



Outsourced Embedded Displays

Our concept

Raise your efficiency by outsourcing your embedded displays to us – and you will:

- Save time
- Save cost
- Save trouble
- Reduce complexity
- Meet all deadlines



iLCDs by demmel products

More than a **display**.
An **embedded display**.
A **one-stop HMI**.

